

2730 SQ FT
3 BEDS
2.5 BATHS

HUNTER



MAIN: 1302 SQ FT

UPPER: 1471 SQ FT

Sterling HOMES

A QUALICO® Company

ELEVATIONS



CRAFTSMAN



FARMHOUSE



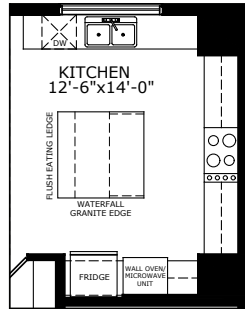
PRAIRIE



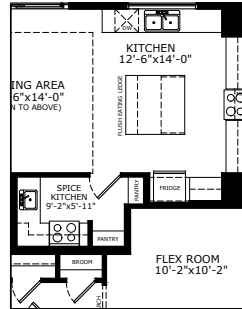
SCANDINAVIAN

MAIN FLOOR OPTIONS

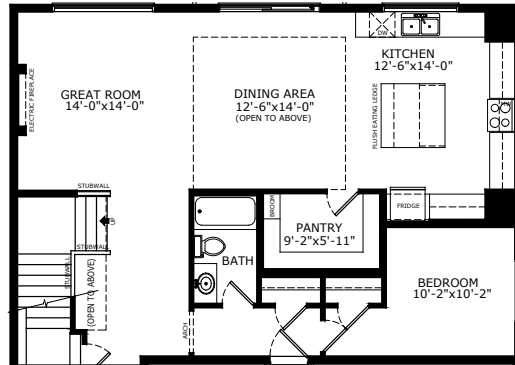
EXECUTIVE KITCHEN



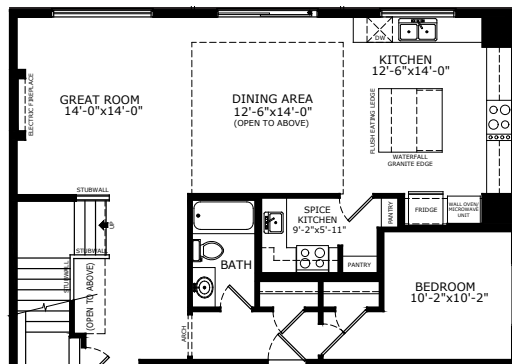
SPICE KITCHEN



OPTIONAL FULL BATH WITH BEDROOM

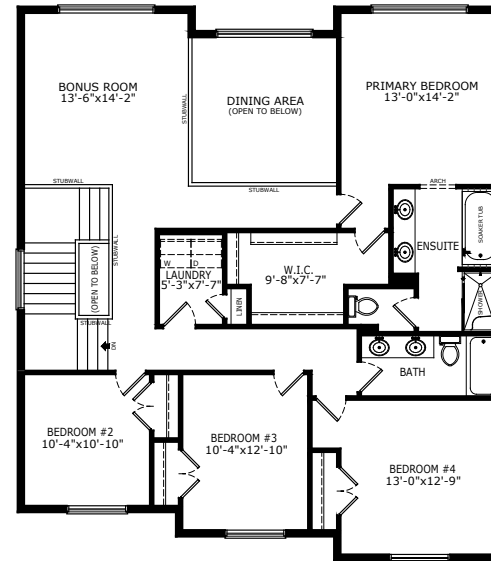


OPTIONAL SPICE KITCHEN AND OPTIONAL FULL BATH WITH BEDROOM

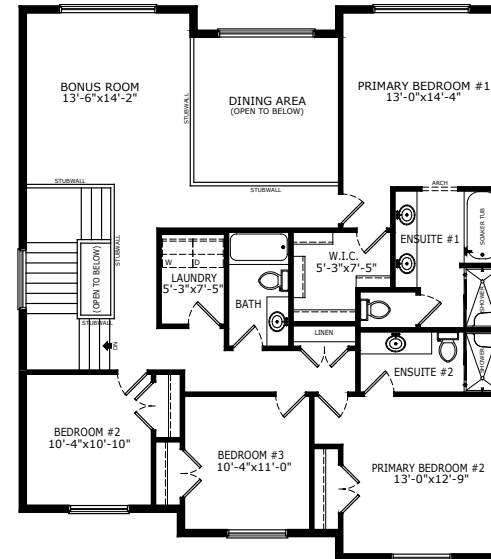


UPPER FLOOR OPTIONS

OPTIONAL 4 BEDROOMS

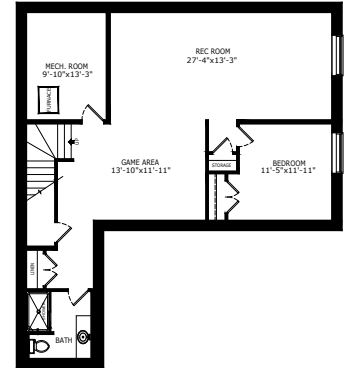


OPTIONAL 2ND PRIMARY BEDROOM

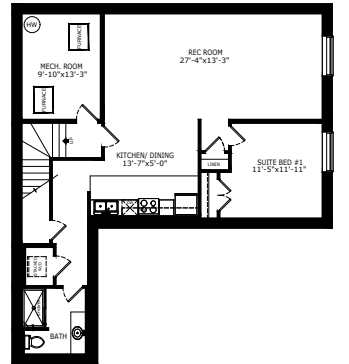


BASEMENT OPTIONS

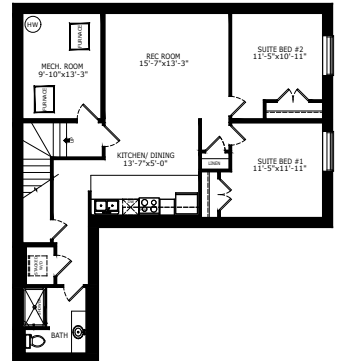
STANDARD 977 SQ FT



1 BEDROOM 'LEGAL SUITE' 977 SQ FT



2 BEDROOM 'LEGAL SUITE' 977 SQ FT



Scan here
for floorplan
options and
more

*Legal Suite availability varies by community and municipal regulations.

Build Your Life

STERLINGCALGARY.COM